



GEARHEADS(POWERFUL TYPE) Frame size 90mm sq. (3.54 in. sq.)

BALL BEARING TYPE

▶ **RATED TORQUE OF GEARHEAD**

MODEL	Speed(rpm)		500	300	200	120	100	60	50	30	20	15	10	9	6	5	3	2	1
	Ratio	Speed	3	5	7.5	12.5	15	25	30	50	75	100	150	166.7	250	300	500	750	1500
		60Hz	3.6	6	9	15	18	30	36	60	90	120	180	200	300	360	600	900	1800
L9VK□B L9WK□B L9V10D(DECIMAL)	High	kg-cm	18.0	30.0	45.0	67.5	81.0	122.1	146.5	200	200	200	200	200	200	200	200	200	200
	Low	kg-cm	14.1	23.5	35.2	52.9	63.5	95.7	114.8	191.4	200	200	200	200	200	200	200	200	200
	High	N-m	1.76	2.94	4.41	6.62	7.94	11.97	14.36	19.60	19.60	19.60	19.60	19.60	19.60	19.60	19.60	19.60	19.60
	Low	N-m	1.38	2.30	3.45	5.19	6.22	9.38	11.25	18.76	19.60	19.60	19.60	19.60	19.60	19.60	19.60	19.60	19.60
	High	oz-in	250	416	624	938	1125	1696	2035	2777	2777	2777	2777	2777	2777	2777	2777	2777	2777
	Low	oz-in	196	326	489	735	882	1329	1595	2658	2777	2777	2777	2777	2777	2777	2777	2777	2777

- * The normal torque is that the motor and gearhead are directly coupled.
- * Insert the denominator of reduction ratio in □ of gearhead model name.
- * Actual rotation speed is 2~15% less than synchronous speed.
- * Color indicates that the rotation of gearhead shaft is in opposite direction as output shaft of motor.

With Decimal Gearhead

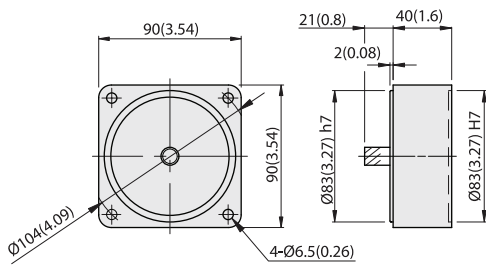
SPEED CONTROL & BRAKE REVERSIBLE MOTORS

DIMENSIONS

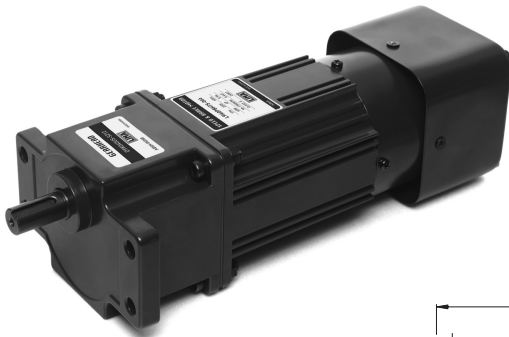
Unit : mm(inch)

DECIMAL GEARHEAD

L9V10D

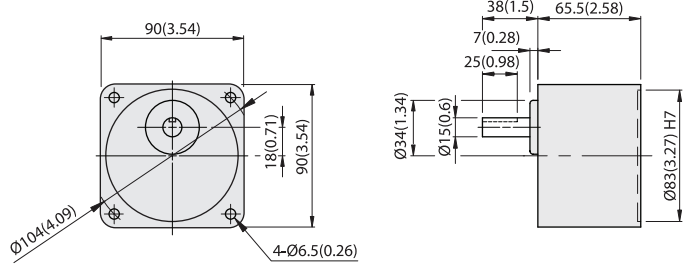


WEIGHT 0.6kg (1.3 lb)

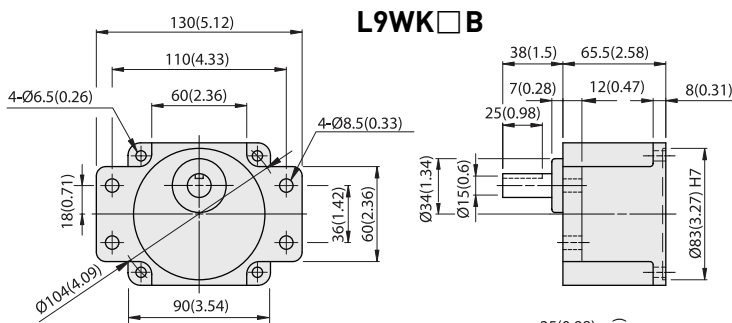


GEARHEAD

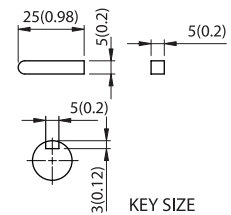
L9VK□B



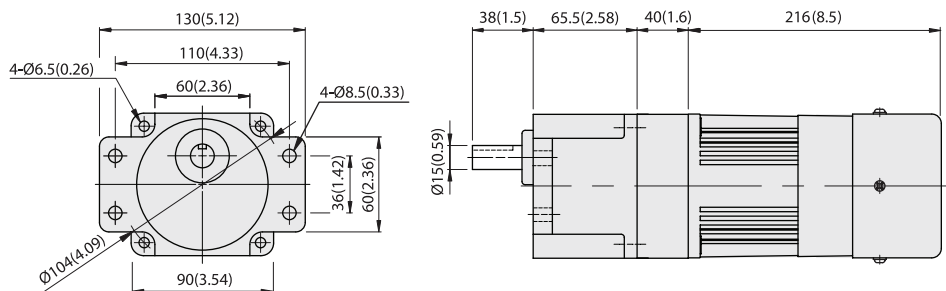
L9WK□B



MODEL	GEAR RATIO	WEIGHT		BOLT
		kg	lb	
L9VK□B	1/3~1/200	1.5	3.3	M6x95
L9WK□B	1/3~1/200	1.6	3.5	M6xL25



L9WK□B + L9V10D + L9R120P□HES





GEARHEADS(ULTRA POWERFUL TYPE) Frame size 90mm sq. (3.54 in. sq.)

BALL BEARING TYPE

▶ RATED TORQUE OF GEARHEAD

MODEL	Speed(rpm)		500	300	200	120	100	60	50	30	20	15	10	9	6	5	3	2	1	
	Ratio	Speed	50Hz	3	5	7.5	12.5	15	25	30	50	75	100	150	166.7	250	300	500	750	1500
L9UK□B	High	kg-cm	18.0	30.0	45.0	67.5	81.0	122.1	146.5	244.2	300	300	300	300	300	300	300	300	300	300
	Low	N-m	1.76	2.94	4.41	6.62	7.94	11.97	14.36	23.93	29.40	29.40	29.40	29.40	29.40	29.40	29.40	29.40	29.40	29.40
L9V10D(DECIMAL)	High	oz-in	250	416	624	938	1125	1696	2035	3391	4166	4166	4166	4166	4166	4166	4166	4166	4166	4166
	Low	oz-in	196	326	489	735	882	1329	1595	2658	3564	4166	4166	4166	4166	4166	4166	4166	4166	4166

With Decimal Gearhead

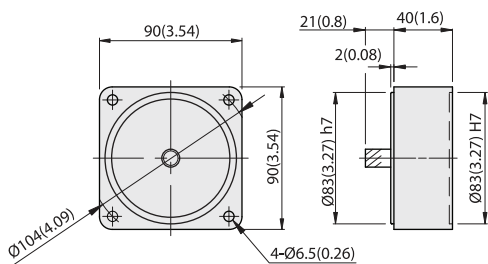
- * The normal torque is that the motor and gearhead are directly coupled.
- * Insert the denominator of reduction ratio in □ of gearhead model name.
- * Actual rotation speed is 2-15% less than synchronous speed.
- * Color indicates that the rotation of gearhead shaft is in opposite direction as output shaft of motor.

DIMENSIONS

Unit : mm(inch)

DECIMAL GEARHEAD

L9V10D

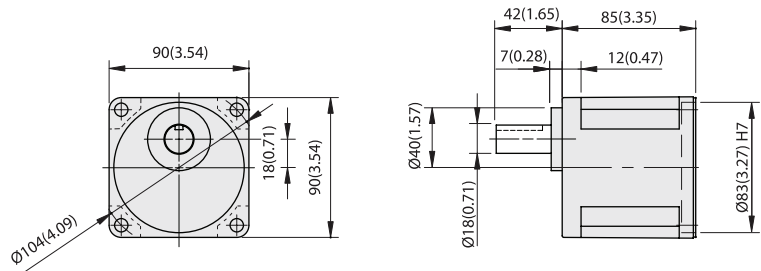


WEIGHT 0.6kg (1.3 lb)

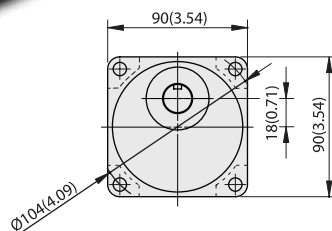
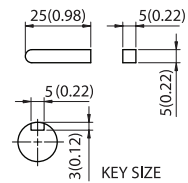


GEARHEAD

L9UK□B



MODEL	GEAR RATIO	WEIGHT		BOLT
		kg	lb	
L9UK□B	1/3~1/200	1.95	4.3	M6xL20



L9UK□B + L9R120P□HES

